

# TTL

## Through The Lens THE MONTHLY NEWSLETTER of Island Photo Group

Dedicated To Excellence In Photography

Volume I No. IX

<http://www.islandphotogroup.org>

May 2004

### Photographer's Secrets For A Great National Park Vacation

*Thanks to Glenn DeBona for this information*

Here's how to save money (better spent on the use of more film) and cut red tape to plan a vacation on public lands.

1. **Get In By The Carload.** A Golden Eagle Passport (\$25) admits you and everyone in the car to 136 National Parks and Forests for one year. Anyone between the ages of 18 and 61 can buy it at any park that charges admission or from the NPS, P.O. Box 37127, Washington, DC 20013-7127, Attn: Public Inquiries. Seniors over 61 can get a lifetime pass (Golden Age Passport) for \$10, free for people with disabilities.

2. **Map Out A Scenic Drive.** For free BLM (Bureau of Land Management) maps showing scenic byways, trails, etc., call 202-208-5717 or write to BLM, Dept. of Interior, 1849C Street N.W., Suite 5600, Washington, DC 20240.

3. **Reserve A Campsite Free.** Call the National Park Reservation Center at (800) 365-CAMP for 13 National Parks: Acadia, Assateague Island, Cape Hatteras, Death Valley, Grand Canyon, Great Smokey Mountains, Joshua Tree, Rocky Mountain, Sequoia and Kings Canyon, Shenendoah, Whiskeytown, Yellowstone, and Yosemite.

4. **Find An Undiscovered Park.** Lesser-known areas of the National Park System list more than 170 parks, their accommodations, and their historic significance. The government offers a National Parks System Map and Guide #138, \$1.25 and the Lesser Known Areas Publication #137A, \$1.50. Contact R. Woods, Consumer Information Center 4A, P.O. Box 100, Pueblo, CO 81002. The National Wildlife Refuge Visitors Guide is available free from the Fish & Wildlife Service's Publications Unit, 4401 North Fairfax Drive, MS 130 WEBB, Arlington, VA 22230

5. **Expand Your Mind.** Many parks offer field schools. There you can learn about park ecology, wildlife tracking, wildflower photography, etc. Classes last about a week and cost between \$40 and \$800. For a list, send a self-addressed envelope to The Conference of National Parks Co-operating Associations-Education, P.O. Box 640, Charles Town, WV 25414.

Now that you read this, it is no longer a secret!!!

## What's New ....

IPG Program (Converting Color to B/W using Photoshop)	May 3
IPG Workshop Meeting .....	May 10
Long Island Photoshop Meeting .....	May 12
PFLI Competition Night .....	May 14
IPG Critique Night .....	May 17

## Quick Tips for May



### Butterfly Houses Are Plentiful

Welcome to a world where exotic butterflies alight on your arm. You don't have to travel to a rain forest for this experience. It's all waiting for you at one of these complexes:

\***Butterfly World.** Tradewinds Park South, 3600 W. Sample Rd., Coconut Creek, FL 33073. Call 1-954-977-4400. Open year-round (except Thanksgiving and Christmas) 9:00 AM to 5:00 PM Monday through Saturday and 1:00 PM to 5:00 PM on Sundays.

There are many other butterfly houses in the US and Canada that are also worth seeing. Here are some of the larger ones:

**Butterfly Pavilion and Insect Center.** 6252 W. 104<sup>th</sup> Ave., Westminster, CO 80020. Open all year-round. Call 1-303-469-5441

**Butterfly Place At Papillon Park.** 120 Tyngsboro Rd., Westford, MA 01886. Open April through mid October. Call 1-978-392-0955

**Cockrell Butterfly Center, Houston Museum Of Natural Science,** One Hermann Circle Dr., Houston, TX 77030. Open year-round. Call 1-713-639-4629

**Day Butterfly Center At Callaway Gardens.** P. O. Box 2000, Pine Mountain, GA 31822. Open year-round. Call 1-800-225-5292

**Marine World Africa USA's Butterfly Habitat.** Marine World Parkway, Vallejo, CA 94589. Open March through October. Call 1-707-644-4000 ext. 270

**Niagara Parks Butterfly Conservatory.** Box 150, Niagara Falls Ontario, L2E 6T2, Canada. Open year-round. Call 1-905-356-8119

**Vancouver Island Butterfly World.** P.O. Box 36, Coombs, BC Canada V0R-1M0. Open mid-March through early November. Call 1-250-248-7026.

Animating your garden with these delightful creatures doesn't require much effort or expertise.

If you plant the nectar and larval plants they need, butterflies will find them.

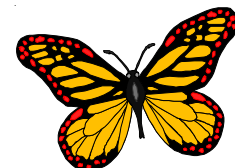
Butterfly-friendly perennials include Asters, Phlox, Golden Rod, Milkweed to name a few. Annuals include Marigolds, Cosmos and Zinnias.

The Butterfly Bush (I have one) can grow to 10 feet and is a butterfly magnet.

There are a number of books on the subject I'm sure, you may want to look at "The Butterfly Gardeners Guide", published by the Brooklyn Botanic Garden.

\*Largest in the world

Glenn DeBona



# PNYISI PHOTO GROUP

Dedicated To PHOTOGRAPHIC EXCELLENCE

**Ellsworth Allen Park**  
**101 Motor Avenue**  
**Farmingdale, NY 11735-4030**

President • **Charlie Bowman**  
 (516) 735-7126  
[president@islandphotogroup.org](mailto:president@islandphotogroup.org)

Secretary • **Phyllis Karikas**  
 (516) 796-5556  
[secretary@islandphotogroup.org](mailto:secretary@islandphotogroup.org)

Treasurer • **Hank Meier**  
 (516) 822-1565  
[treasurer@islandphotogroup.org](mailto:treasurer@islandphotogroup.org)

Publicity • **Glenn DeBona**  
 (516) 249-3513  
[publicity@islandphotogroup.org](mailto:publicity@islandphotogroup.org)

Newsletter • **Jeffrey Blye**  
 (516) 292-0478  
[editor@islandphotogroup.org](mailto:editor@islandphotogroup.org)

PFLI • **Sherman Paur**  
 (516) 333-7623  
[pflirep@islandphotogroup.org](mailto:pflirep@islandphotogroup.org)

Program/Workshops • **Howard Rosenberg**  
 (516) 249-7758  
[programs@islandphotogroup.org](mailto:programs@islandphotogroup.org)

Membership • **Jo Edmundson**  
 (516) 735-7144  
[membership@islandphotogroup.org](mailto:membership@islandphotogroup.org)

Webmasters • **Roy & Alan Linker**  
 (516) 223-1761  
[webmaster@islandphotogroup.org](mailto:webmaster@islandphotogroup.org)

## IPG Information

### **Meetings**

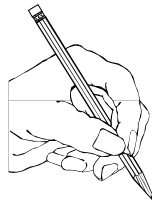
**IPG meetings** will be held from 7:30 - 10:00 PM on the 1<sup>st</sup>, 2<sup>nd</sup>, and 3<sup>rd</sup> Mondays of each month, except for holidays, at our meeting room located at:

Ellsworth Allen Park  
 101 Motor Avenue  
 Farmingdale, NY 11735

**Critique Nights** will be held the 3<sup>rd</sup> Monday of every month

All IPG members can submit 2 photos in each of the following categories:

**Color Prints, B&W Prints and Slides**



## President's Message

Well, the day has finally arrived. Today, April 29<sup>th</sup> 2004, I joined the ranks of the "retired". I'm hoping that I will now have the free time to devote to this hobby of ours. I'm looking forward to going out to shoot photos whenever I feel like it rather than fitting it in to my work schedule. Of course I still have to coordinate with my wife's "Honey-do list" but I'm sure that I can manage it.



Charlie Bowman, IPG President

Congratulations to Dan Gentile and Joe McGahan on winning the free tickets to the Epson Print Academy. I hope they enjoyed it and that they learned some tips and techniques on printmaking which they can pass on to the rest of us. It was good to see Frank DeVittorio, following his surgery, at our last meeting. I'm sure that all of us are glad that he is recovering so well and so quickly. We look forward to Jo Edmundson's quick recovery and to her return to the IPG meetings very soon.

I am searching for a restaurant to host an IPG dinner at the end of June. If anyone knows of a place which serves good food at reasonable prices, let me know and I will check it out. I will be e-mailing a survey to find out how many members would attend the dinner.

Regards,  
 Charlie



## March 2004 PFLI Scores

### COLOR SLIDES A GROUP

GLENN DEBONA - Yosemite - 24  
 RUSS POPEIL - Back Lite Bird - 24  
 JO EDMUNDSON - Resting In the Forest - 21  
 HANK MEIER - Bar Harbor Sunrise - 21  
 HANK MEIER - Going To Church - 21

### COLOR SLIDES B GROUP

DAVID KARIKAS - Arches National Park - 21  
 PHYLLIS KARIKAS - Sunrise Oxbow Bend - 21

### COLOR PRINTS A GROUP

HANK MEIER - Land That Time Forgot - 24  
 ALAN LINKER - Battlefield Sunset - 24  
 SHERMAN PAUR - Red And Blue Pattern - 23  
 HOWARD ROSENBERG - Leibovitz Gallery - 21  
 JO EDMUNDSON - Magnolia Bud - 21  
 GLENN DEBONA - Polo Match - 21  
 JEFFREY BLYE - Rusted Chain - 20

### COLOR PRINTS B GROUP

LEE COOPER - World of Birds - 24  
 MIKE GINEX - Yellow Crown Hunter - 23  
 DAVID KARIKAS - Mt. Rundie - 23  
 PHYLLIS KARIKAS - Purple Mt. Majesty - 23  
 JOSEPH PRANTIL - Looking Up - 23  
 FRANK DI VITTORIO - Puddy Cat - 21  
 ROY LINKER - St. Louis Arch - 21

### BLACK & WHITE PRINTS A GROUP

JEFFREY BLYE - Yellow Eyed Owl - 23  
 SHERMAN PAUR - White Lily - 23  
 HANK MEIER - Fishing Boat - 23  
 GLENN DEBONA - Big Daddy - 23  
 ART INSELSBERGER - Almost Gone - 21  
 HOWARD ROSENBERG - Car - 21  
 MIKE GINEX - Slow Drip - 20

### BLACK & WHITE PRINTS B GROUP

PHYLLIS KARKIS - Cloudy Day in Canada - 23  
 ALAN LINKER - Montauk Lighthouse - 23  
 ROY LINKER - Canal Bridge - 23  
 JOE PRANTIL - Lonely Gull - 21  
 DAVID KARIKAS - Lynx 1 - 21  
 FRANK DI VITTORIO - Water Tower - 20