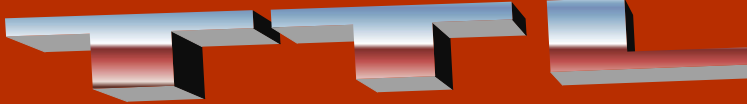




# ISLAND PHOTO GROUP NEWS



FALL 2007

WWW.ISLANDPHOTOGROUP.ORG

## Always in Focus!

### Island Photo Group Board Members

President Joe Pellicone

1st VP Lou Cohen

2nd VP Richard Fiedorowicz

Secretary Ann Marie Denese

Treasurer Glenn DeBona

PFLI Representatives

Pat Hutcherson / Sherman Paur

Publicity/ Information

Joe Pellicone

Membership Charlie Bowman /

Jo Edmundson

Newsletter Editors Joe Pellicone /

Jeff Breiman

Webmaster Richard Fiedorowicz

PFLI Coordinators Joe Prantil /

Frank DiVittorio

Programs Chairperson

Russ Popeil / Sherman Paur

Workshops Chairperson(s)

Richard Fiedorowicz

Prints Chairperson(s)

Joe Prantil

Slides Chairperson(s)

Pat Hutcherson

Field Trips Chairperson(s)

Jeff Blye

Calendar

Richard Fiedorowicz

Fund Raising Chairperson(s)

Frank DiVittorio

## PHOTOSHOP TIPS from Jeff Breiman

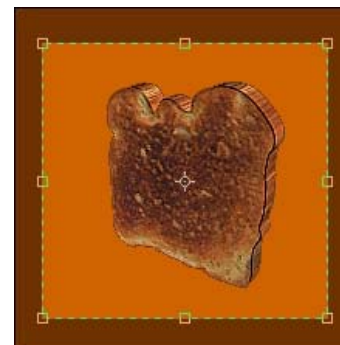
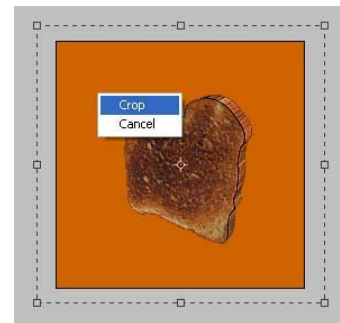
So I opened my big mouth and told our new president that I would assist with our newsletter & updates.

What's a newbie to do? After all, you can only make a first impression once!

My first contribution will show you how to put a border around an image in 10 seconds or less. That's right, I said 10 seconds (provided that Photoshop is already opened with an image waiting for a border). I read about this technique in a book by Scott Kelby – a Photoshop guru with a great sense of humor.

OK...got your stopwatch?

Here is my image waiting for me in



Photoshop (What can I say? I like toast.) Open the crop tool and create a crop mark anywhere inside the image (2 seconds).

Now extend the crop marks outside the boundaries of the image (2 seconds).

Right-click inside the image, and click on "Crop" (2 seconds). Finally, after 6 seconds we now have a border around our image. Check your stopwatch. I think I just broke my own record. Now you can get really creative ...color the border, add more borders, change the shape of the border, etc... Below is a sample business card created using this

## VOLUNTEERS WANTED TO HANG THE NEW PICTURE FRAMES!

## Message from the President



President  
Joe Pellicone

### *Hello Members!*

I'm happy to announce that IPG is off to a great start for the 2007-2008 Photographic Year!

Our new frames have arrived! We have had our first field trip to the Hummingbird Sanctuary and we started our first meeting of the season with a great presentation on composition from Dick Hunt.

Rich Fiedorowicz gave us a complete photoshop summer program, another IPG First! Thanks Rich!

Jeff Breiman has packed this issue of the TTL with tons of photo-

graphic info, I hope you enjoy it!

This year promises new and exciting challenges for photo submission in the new Digital Category and as part of this new program we have acquired a new digital projector!

If you have not already done so, please remember to pay your dues, there is a application form within this newsletter.

Try to be an active member of our group! Your Ideas on how we can improve are important to us! Please get involved!

Joe Pellicone

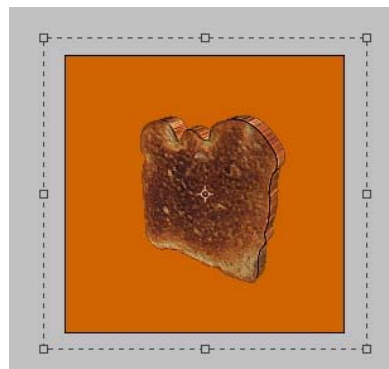
## Photoshop Tips...

*(Continued from page 1)*

technique and the text tool.



Submitted by  
Joe Prantil



And this is how you create a border around an image in 10 seconds or less...



Check out the NEW DIGITAL PHOTO FRAME FROM

# EDGE TECH CORP

<http://www.edgetechcorp.com/accessories/digital-picture-frame.asp>

## HIGH DYNAMIC RANGE IMAGES

I guess that since I love photo painting, falling in love with **High Dynamic Range Images (HDR)**, was inevitable. These images are vivid, intense, saturated, and pack a real punch. HDR images allow a photographer to record a greater range of tonal detail than a camera would yield in a single photo. Since I'm not a highly technical person, this is not a highly technical article on the subject. I'm just touching the surface of a photo technique that may interest some of our club members who want to challenge their creative thinking and vision. If you're a photo purist, you're probably cursing me out already. HDR involves:

**Exposure Blending:** Merge differently exposed photographs into one image with increased dynamic range. Using a technique known as bracketing, you would take multiple shots of the same image at varying exposures – normal exposure, overexposed, and underexposed.

**Tone Mapping:** Revealing the highlight and shadow details in an HDR image created from the multiple exposures. Basically, you're taking the best tonal range from each of the different exposures.

In Adobe's implementation within Photoshop CS2, HDR imaging is accomplished by taking a series of photographs and then using floating point 32 bit (per channel) math, merging these files automatically into one huge high dynamic range image. I don't know what the heck this means however, there is more popular software you can use called Photomatrix \$99.00 (<http://www.hdrsoft.com/>).

Ideally, you should be using .RAW images. Since I'm shooting with a Kodak Easyshare these days, bracketing and .RAW images are not an option for me. I know our photo group is traditionally split among the Nikon and Canon freaks. There is actually a third category of photographers in our club – the Kodak crowd. Everyone knows that all the "cool" kids shoot with Kodak. I'm also too cheap to spend \$99 bucks on the software.

Well, if you search the Internet long enough, you can find what you're looking for. Roman Flosser has written an article on how to ***simulate*** the HDR process. Check out <http://www.nill.cz/index.php?set=tu1> for his technique. It involves creating multiple layers with an assortment of blending modes.

It's enough to make your head spin. Fortunately, he was kind enough to put all the steps into a Photoshop Action (sweet!). There is a pause after each step, which allows you to tweak your image along the way. Click here to download the Photoshop action [http://www.nill.cz/tu1/Fake\\_HDR.atn](http://www.nill.cz/tu1/Fake_HDR.atn). Below is a before and after I created using Roman's action.



The use of high dynamic range imaging in computer graphics was pioneered by [Paul Debevec](#).

by Jeff Breimann

# The Orton Effect

**The Orton Effect** – is named after [Michael Orton](#) who first used this technique. It is a sandwich of two images, one is in focus the other is out of focus.

This technique was traditionally done using slide film. The first image being sharp and overexposed, the second image being out of focus and overexposed, then combining the 2 images into a “sandwich” to create a really beautiful, impressionistic image.

The same effect can also be created digitally. Here is the simplified version that I used:

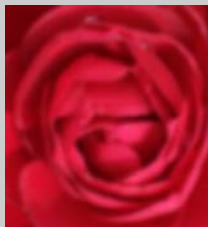
1 – Make a copy of an image you would like to use. Open the **copy** in Photoshop (not the original).



2 - Duplicate the background layer (Right click on the background layer and choose duplicate) so that you have 2 copies of the image. Leave the first copy in sharp focus, but change the blending mode to Screen..

**Sharp original image – change to Screen blending mode**

3 – Take the duplicate layer and apply the Gaussian Blur so that it is out of focus – (Filter Menu, choose Blur - Gaussian Blur). Start with a value of around 15 and change the blending mode to Multiply.



**Out of focus image – change to Multiply blending mode**



4 – The combination of the 2 layers. For the final effect you may need to adjust the sharpness, blur or opacity. This effect doesn't necessarily work with all images.

*By Jeff Breimann*

ISLAND PHOTO GROUP

# KataBag.com

By Russ Popeil

When I first received the R-103 I knew right away that this bag was different. It has a dedicated laptop compartment that holds my widescreen laptop. It also holds both of my Nikon D200 bodies, my 18-200mm VR Nikon lens, my 12-24 mm F4 lens, and my SB800 flash. Included with the bag are two mesh pouches that allow you to store small items. They have Velcro on them so they can be attached to the interior of the bag so they can not fall out. Included with the bag is a rain cover that can be optionally attached to keep the entire bag dry during inclement weather. This bag comes with a “TST tripod holder” that allows you to attach a tripod like my Bogan 3021 to the bag.

Inside I was able to get one D200 with the 18-200 lens mounted stowed in the middle quick access compartment. This feature allows for quick access to the most critical piece of equipment. When you zipper the larger flap open you gain access the entire bag. Once I opened the bag I was greeted by a bright yellow interior that made finding small items easy. Another unique feature are the contoured straps that make the bag feel extremely comfortably on long walks. On a recent field trip, I loaded up the bag with all that I could squeeze into it and then set out for a long day of walking around Manhattan. I am pleased to report that this is definitely the most comfortable backpack that I have ever used. The couture straps made the bag comfortable and the it fit well even though I am taller than average at 6 foot 2 inches.

Air travel with camera equipment is also an interesting endeavor. I took this bag with me on a recent trip to Denver. The real test is that it does fit in the overhead compartment. But the KATA bag not only fit easily on 737 jet overhead compartment, it also fit in a regional jets as well! (It just made it into the overhead on the regional jet, and I could see that if I had been on any smaller of an aircraft, I would have had to gate check the bag). Most of the other backpacks I own do not fit into a regional jet although they might be able to hold more gear. I really liked that my KATA bag holds my laptop and a good assortment of gear and will fit on most jets.

KATA designates this bag as part of its EPH system of products, which makes it expandable by attaching other designed EPH items such as the fanny pack. Overall, this unique bag is a keeper, one that I will be relying on for a majority of my day to day shooting.

I've been reading a book by Catherine Jamieson – "Create Your Own Photo Blog". Catherine is a really creative photographer. You can view her images at <http://www.catherinejamieson.com>. Anyway, towards the end of her book is a list of 100 photo ideas. I won't list all 100 (YAWN!), but here are a few. Perhaps we can have our own monthly photo club challenge on one of these themes? Think of this as an opportunity to show your creativity.

put a pair of sunglasses in a bright spot where they can reflect something interesting. Take a photo of the sunglasses and the reflection in the lenses...

take a photo of a person or people at work. Concentrate on the task, not the person...

take photos of everyday bottles found in your house. Focus on the lighting, angle, perspective...

take a photo of a scene made entirely of shadows...

take a photo of an object with something in front of it that would distort the object... such as a wine glass, magnifying glass... photograph some fruits or vegetables in the supermarket...

take a photo of an object from a different or unusual angle, such as a plant from the top down, a flower from the bottom up...

a photo of a neon sign at night...

take a photo that includes readable text such as an open fortune cookie, a street sign, a

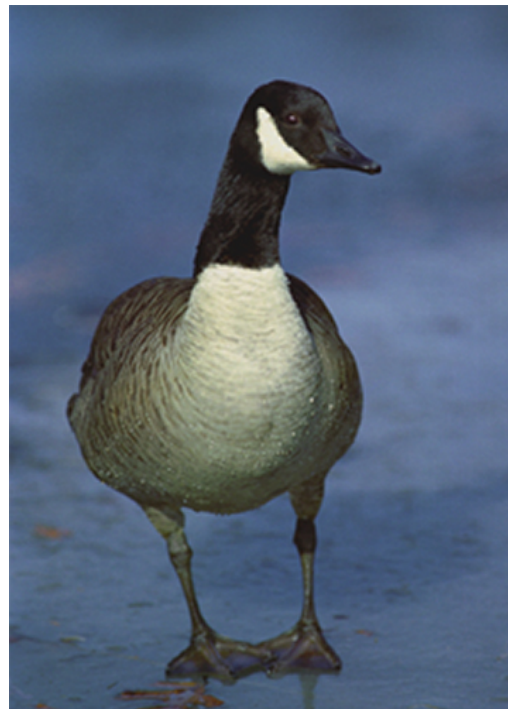
store sign, someone reading a newspaper or magazine. Using the rule of thirds, make the text the subject of the photo by placing it at an intersection or along a line...

Place a piece of tinted cellophane (such as a candy wrapper) over the front of your lens (or part of it) and use it as a color filter...

Take a photo using your own shadow as the main subject in the shot...

Is anyone interested?

**Jeff Breiman**



**Submitted by Mike Ginex**



Submitted by Mike Ginex



## The Metz and the Time Machine

Here are two handy devices on the market which might interest some of our members. The Metz is selling at ADORAMA for about \$140. The Time Machine is selling for around \$300.

No light? No hot shoe? No problem. The Metz 28 CS-2 Digital Slave Flash to the Rescue! Nothing will ruin a shot quicker than on-camera flash.

Unless you've got an SLR, though, indoors you usually have no choice — it's either shiny and straight-on with flash, or dark and blurry without.

No longer! Meet our newest friend: The German-engineered Metz 28 CS-2 Digital Slave Flash. (What will the naming geniuses at Metz think of next?)

Here's how it works: The tiny Metz is an external flash that runs on AAAs. As soon as your camera's own flash fires, the Metz fires, too. Automatically.

Without wires. Within milliseconds. (Speed of light and all that.)

Since it's far, far more powerful than your on-camera flash, your room fills light, and photos look, well, normal. Since it's wireless, you can detach it and put it away from your camera, hold it in one hand while you take a photo with another, point it back, up, down, whatever. It's even got a handy fold-up sliding rail that screws into your tripod socket.

**The Mumford Time Machine** is a programmable controller and intervalometer for special photographic effects. It allows you to trip the shutter of your camera or fire an electronic flash at regular intervals (time lapse), at specific times of day, or in response to trigger events. These trigger events can be sound, light, motion, or electrical signals. A wide variety of

# The Metz and the Time Machine continued.



sensors are available for use with the Time Machine. The Time Machine is exception-

ally easy to use due to it's keypad and LCD screen. All parameters are entered with easy-to-understand text on the screen so you can clearly see what your time lapse interval is or how many exposures have been taken. You don't have to remember arcane codes, decipher blinking lights, or use a PC to program it.

We also have a **motorized rotary table** that can be used with the Time Machine to create time lapse movies that pan across a scene, or as a motorized indexing table to rotate a sub-



ject for "virtual reality" images. [Click here](#) for more details.

Click on the following links to see examples of what the Time Machine can

do for you.

### Nature Photography

The Time Machine can trip the camera shutter, trigger a flash, or start a movie camera



when a creature moves.

### Nature Time Lapse

The Time Machine allows you to take a series of pictures at regular intervals or at specific times of day or night.



These sequences can be combined

into a time lapse movie on the computer. There are many natural subjects for time lapse, like clouds and plants.

### Construction Time Lapse

A common application of time lapse photography is to document the construction of a building. Still pictures are taken several times a day during

*The Time Machine can trip the camera shutter, trigger a flash, or start a movie camera when a creature moves*

## The Metz and the Time Machine continued.

construction to create a history of the project.

### Industrial Time Lapse

There are industrial applications of time lapse photography as well. Many mechanisms operate too fast to observe. Because their motion is regular, a sequence of still images taken at increasing delay times will produce a "slow motion" effect much that's less expensive than high speed movies.

### High Speed Photography

For events that are too fast to see normally, you can configure The Time Machine to trip an electronic flash in a dark room while the camera shutter is held open. This will freeze motions that are just a blur to our eyes, like popping balloons or water drops.

### High Speed Time Lapse

With the sequencing and variable timing



functions of the Time Machine you can make "slow motion"

movies of high speed photographs.

### Ballistics

Harold Edgerton, inventor of the strobe light, took amazing pictures of bullets in

flight. The Time Machine makes it possible to time exposures on this scale of precision, but you need a very fast flash to freeze very fast motions.

### Exotic Effects

The many controls of the Time Machine allow you to take pictures of situations we probably haven't even imagined yet. Take a look at some of these exotic effects!

The Time Machine has several ways to take pictures:

- By tripping the electric shutter release cable of your camera.
- By firing an electronic flash while your camera shutter is held open.
- By sending a software command to trip the shutters of a variety of digital cameras including Nikon



Coolpix, Epson PhotoPC, and many Olympus cameras.

- By simulating the remote controls

of many Olympus, Canon, and Sony cameras.

- With the Lanc protocol used in many movie cameras.

## The Metz and the Time Machine continued.

The Time Machine works equally well with film or digital cameras. Common cameras used are Nikon SLRs, Nikon Coolpix, Canon SLRs and Digital Rebel, Sony, Olympus, Pentax, and many others. If you want to know if the Time Machine will work with your camera, send us an email.

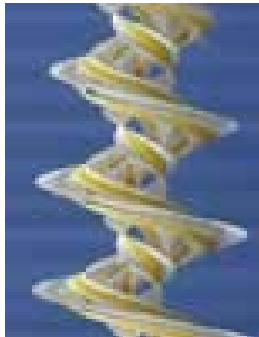
The Time Machine has a variety of programmable delay times that allow you to determine precisely when an exposure will be made in relation to the trigger event. It can time delays as short as ten microseconds or as long as 24 hours.

When used as an intervalometer, you can program The Time Machine to take exposures at specified intervals or at specified times, and exposures can be restricted to just daytime or night. It's internal 24 hour clock is cali-



The Time Machine will run on its internal battery for a couple of days, or you can plug it into a larger capacity battery for field work or use it with the included AC adaptor.

The Time Machine has other



modes that can be useful to the photographer. It can be configured to fire an electronic flash as a slave to the flash in your camera. It can be configured to ignore the pre-flash of digital cameras or the multiple flashes of red-

brated to an accuracy of two or three seconds per week.

eye reduction. It can measure the shutter speed of film cameras. It can measure the lag time between when the camera shutter is tripped and when a picture is taken, and it can measure the duration of an electronic flash in millionths of a second. It can even measure the lag time between when an electronic flash is triggered and when the light actually appears, in millionths of a second.

For a technical description of the various modes of operation built into the Time Machine,

[Click Here.](#)

A variety of sensors are available for The Time Machine including acoustic sensors, optical sensors, motion detectors, a laser beam, or crossed-beam optical sensors with infrared or laser light.

**Jeff Breimann**

## Contemplating the Flash...



**RUSS POPEIL**  
" THE FLASH "

Island Photo Group's own Russ Popeil contemplates the flash! Actually Russ gave a expert class on flash units as well as on camera flash. He discussed how to use the simple on camera applications as well as advanced

topics like wirelessly syncing multiple flash units to fire from your camera's infrared system. IPG members that attended got hands on experience trying out the techniques and learning how to set their cameras

and their flash units. I know I learned a few good tips and I think that everyone had a interesting and enjoyable time.

On behalf of the rest of the members, Thanks Russ for your informative presentation.

## IPG Summer Photoshop Workshop!



**RICH FIEDOROWICZ**

One of the things that makes Island Photo Group a really terrific Photo and Camera Club, is our talented members. And when we talk about talent, one member really comes to mind, that's Rich Fiedorowicz our 2nd Vice President. Rich single handedly put together a entire Photoshop Summer Workshop complete with homework and professional take home notes! If you were at the meetings you know

that they were standing room only! We even had members from other camera clubs attend! I know that I learned a lot from Rich's classes and I'm looking forward to seeing what he has up his sleeve for his next presentation!

Thanks to Rich for investing a lot of his own time to present the series, write the notes and show us new ways to improve our photos in photoshop.



**SHARON SCHWARZ**

## Hummm...

Many of our members took advantage of our trip to the Hummingbird Sanctuary in Baiting Hollow. I believe everyone had a great time. We were not only treated to a nice Hummingbird Photo experience but also to exquisite views of Long Island Sound. For this unique trip we owe our thanks to Sharon Schwarz who spent countless hours preparing and coordinating the trip. I had a very enjoyable day with my fellow Island Photo Group members!

## New Digital Picture Frame

Digital picture frames are nothing new in the photographic world, but one company that has its background in Digital Media Cards, Computer Memory, USB and Portable Hard Drives has entered the field with a rather elegant looking and simple to use unit. The company is Edge Tech Corp. and you can see all their products at <http://www.edgetechcorp.com/>

When you remove the frame from its packaging you will immediately notice the nice clean look. All buttons and controls are out of site and all you see is a beautiful 7" TFT active matrix LCD Screen and its surrounding frame available in four colors. A closer look at the front reveals the infrared receiver for the remote.

Turning the unit around reveals 10 button controls, two media card slots that accept CF, Microdrive, SD, Multimedia, Memory Stick, and Memory Stick Pro. Sorry all you folk who are still using SmartMedia

Cards that one is not supported. Tucked on the side of the unit is the on/off switch and outputs for external sound and video (you can output to your TV or other Video Device as long as it has RCA Inputs)

What you don't really notice are the built in speakers that give off a surprisingly good sound. This comes in handy because the picture frame doubles as a MP3 player too!

Now like most guys, when we get a new electronic toy, we immediately want to play with the buttons and throw the instructions away. The better the toy the less

you have to read the owner's manual. Well this photo frame passes that test with flying colors and that's because it comes with a fully functional couch potato style remote control.

I formatted an old 128mb CF card (but you can use larger ones), and put about 100 photos on it. I kept the resolution at about email size so I could get more photos on the card. You really don't need them larger than this for display on this size screen. Then I just popped the card into the photo frame turned it on and in a matter of seconds, I was looking at the slideshow.

It was easy to set up just as they had advertised. The show was easy to manipulate with the use of the remote and I thoroughly enjoyed it. Operating and setting up the unit from the remote is much easier and faster than trying to use the buttons on the back. I found myself flipping the unit multiple times since I was not familiar with button locations. But using the remote, the setup took just a few minutes.

Included with the unit is a AC Adaptor, a RCA Video cable and the Remote Control.

In my opinion if you're looking for a desktop digital photo frame, you should definitely check out [www.edgetechcorp.com](http://www.edgetechcorp.com)



**EDGE TECH CORP  
DIGITAL PICTURE  
FRAME**

# MATCH COLOR IN PHOTOSHOP

The Match Color function in Photoshop allows you to take the tonal range from one image and impose it upon another image. Really...

Open up a copy of the image you would

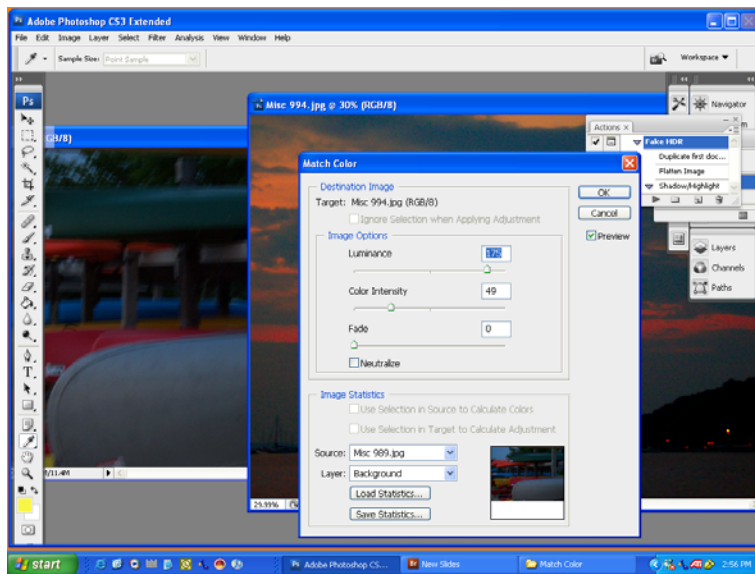
Make sure the first image is the selected working image

Chose Image – Adjustments – Match color  
The Match Color dialog box will open. Under Source, click the drop

down menu and select the image with the desired tonal range.

There will be a thumbnail for you to check that you have selected the correct image.

Turn on the preview option if it isn't already. The working image will now take on the color attributes of the second image. Tweak the color range.



Jeff Breimann

like to change  
Open up the second image with the desired tonal range



Original image

+

Tonal range image

=

Final image

Island Photo Group Membership Application



**2007 - 2008**

NEW APPLICATION       RENEWAL

**Dues \$40**

**Please Make Checks Payable to Island Photo Group**

**Name:** \_\_\_\_\_

**Address:** \_\_\_\_\_

**City:** \_\_\_\_\_ **State:** \_\_\_\_\_ **Zip:** \_\_\_\_\_

*Contact Information:*

**Home Phone:** \_\_\_\_\_

**Cell Phone:** \_\_\_\_\_

**Work Phone:** \_\_\_\_\_

**Email Address:** \_\_\_\_\_

*Photo Submission Classification:*

Enter "B" for Beginner or "A" for Advanced in each category that you would like to submit photos for critique or for PFLI.

\_\_\_\_\_ **Color Prints**      \_\_\_\_\_ **B&W Prints**      \_\_\_\_\_ **Slides**      \_\_\_\_\_ **Digital Submissions**

**If you have ideas for Field Trips or Club Activity Suggestions Please note them here:**

\_\_\_\_\_  
\_\_\_\_\_

*Please Do Not Write Below This Line*

---

Date Paid: \_\_\_\_/\_\_\_\_/\_\_\_\_

Membership #: \_\_\_\_\_



IPG Voice Mail 516-986-4976

E-mail: [IslandPhotoGroup@gmail.com](mailto:IslandPhotoGroup@gmail.com)

[www.IslandPhotoGroup.org](http://www.IslandPhotoGroup.org)

ALL CONTENT COPYRIGHT © ISLAND PHOTO GROUP

## Classified Ads

Place an ad HERE, it remains in the TTL until it sells.

**NEW - ISLAND PHOTO GROUP TEE SHIRTS!** Available in Large, XL and 2XL. Only \$15each! Purchase from IPG contact:

Glen Debona [ggdb@optonline.net](mailto:ggdb@optonline.net)

**Hydrosorbent Dehumidifiers** If you read the article in the last issue of TTL you know that moisture can kill your lenses. Protect them with a REUSABLE Silica Gel Dehumidifier pack. Only \$6.00

Purchase from IPG - contact Glen Debona [ggdb@optonline.net](mailto:ggdb@optonline.net)

**16 x 20 Professional Mat Board** Black on one side and White on the other. Only \$1.50 ea

Purchase from IPG - contact Glen Debona [ggdb@optonline.net](mailto:ggdb@optonline.net)

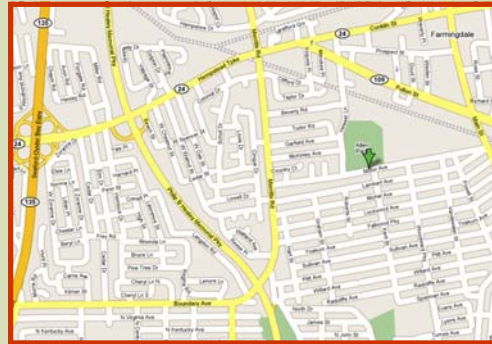
**HEWLETT PACKARD 840C INKJET PRINTER.** Hardly used, Needs Cartridges. You can have it for a \$10 Donation to IPG. [tshrtkng@verizon.net](mailto:tshrtkng@verizon.net)

**EPSON 1270 Color Printer,** Prints up to 13x19 Excellent Condition, NEW Black & Color Ribbons!

Call Sherman (516) 333-7623

If you're a Novice Photographer, a Professional or anywhere in between, check out our group! We're all about sharing ideas, knowledge, and promoting great photography. If you want to learn or are willing to offer your photo experience then this is the club for you! Some of us still shoot film while others are shooting digital. Come check us out as our guest, no obligation to join.

We meet the first 3 Mondays of Every Month (excluding holidays) In Ellsworth Allen Park, Motor Avenue, Farmingdale, NY



<http://maps.google.com/maps?f=q&hl=en&q=motor+avenue,+farmingdale,+ny&ie=UTF8>

*Click or Cut and paste the link above for the Google map*

## L.I. Photoshop Users Group

NEW MEETING PLACE  
MASSAPEQUA PUBLIC LIBRARY  
HARBOUR LANE. MASSAPEQUA PARK

CHECK WEBSITE FOR DETAILS

[www.liphotoshop.org](http://www.liphotoshop.org)